

VOYAGE PERFORMANCE SOFTWARE

BRIEF DESCRIPTION

SMM - Voyage Performance is the solution for providing performance analysis and tracking for your entire fleet, offering shore-side managers extensive insight into historical, present and even future performance. It delivers analytics to manage assets more efficiently and improve operational and strategic decision-making. SMM - Voyage Performance is easy to use and provides critical information when you need it. Whether you're monitoring in-progress or past voyages, SMM - Voyage Performance provides an integrated set of tools to help you manage your fleet to its full potential.

Features & Benefits of this Module for vessel and office application:

- With the software in place, the user can then evaluate the SMM - Voyage Performance against Charter Party terms and provisions.
- For the SMM - Voyage Performance module, the solver is based on the monitoring and reporting of basic parameters during the voyage, their comparison against reference values under actual conditions, charter party terms and warranty conditions.
- Overall Voyage Assessment = Function {Fuel Consumption Calculation, Time Calculation, Charter Party Claims}.
- The SMM - Voyage Performance assists by establishing systematic records for the evaluation of the SMM - Voyage Performance against Charter Party: fuel consumption calculation, time calculation, Charter Party claim and overall voyage assessment. Considering that in Charter Party (CP) agreements; speed and consumption warranties are incomplete or vaguely defined in engineering terms. Therefore, it has always been a challenge to determine whether ship performance is due to adverse external factors or due to a badly maintained engine system, giving rise to disputes between charterers and operators.

FREQUENTLY ASKED QUESTIONS

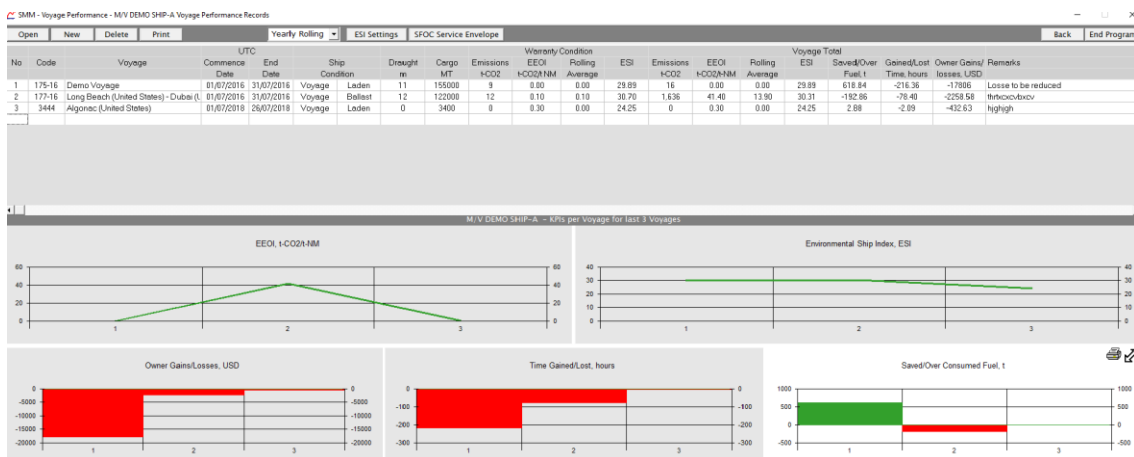
1. How the crew familiarization is achieved?
 - a. Manual is incorporated in each Program with detailed & extensive Instructions
 - b. Distant Training
 - c. Direct Replies to Email of Masters / Chief Officers / Chief Engineers with Cc to your good Company
 - d. User Friendliness of Software Interface with a brief description of required actions

2. How we can we handle tiresome ISM / SMS Amendments for alignment with this SMM Product?
 - a. SMM Software is tailored to your company's policy/S.M.S. meaning minor ISM/SMS alterations.
 - b. Just a quick reference to the SMM Software in place and their Manual Contents in ISM is, often, common and effective practice for the majority Shipping Companies.

3. Relative requirements of Programs (hardware, software, data exchange if any)
 - a. Light, server-based application running exclusively on Windows operating system environments
 - b. SMM Software can be operated by multiple users (clients) on a network
 - c. Sync Mechanism requires email access or *data import path* for the whole fleet or a desired path for each vessel.
 - d. Possible export in desired editable format, upon discussion and analysis.

SCREENSHOTS

Please see below **Screenshots**:



WE CAN SAIL TOGETHER.....

S.A. Malliaroudakis Maritime (UK) Ltd.

UK Office: 1, Portulacea Gardens · High Snoad Wood · TN25 4DS · Challock, Ashford, Kent · U.K. · **Tel:** [+44 \(0\) 1233 742673](tel:+4401233742673)

GR Office: 41, Agiou Dimitriou Str. · 185 46 · Piraeus · Greece · **Tel.:** +30 210 45 10000 · **Fax:** + 30 210 46 10333

Web: www.smmnet.com · **Email:** info@smmnet.co.uk , sales@smmnet.co.uk
