



DESCRIPTION OF EMERGENCY RESPONSE SERVICE



TABLE OF CONTENTS

Why You Should Enroll Your Vessels?2
 The Benefits of our Service2
 For Effective Response In Times Of Crisis Cover Your Company And Vessels Today..3
 SMM Emergency Response Service Implementation.....3
 Doing Business With Us Keeps Your Company Always One Step Ahead...3
 SMM Possesses Enhanced Know-How & Experience for Successful Salvage Planning.4

Why You Should Enroll Your Vessels?

No matter how well a ship is designed, constructed, operated and maintained, accidents still happen. No transportation system is totally safe. Therefore, as in other industries, planning for emergency response is a necessity.

SMM Emergency Response Service aims to cover your company and vessels, in times of crisis, when ship's crew and management quickly need *precise technical information*. To minimize the consequences of casualty at sea, a thorough assessment of vessel's Damaged Stability and Residual Strength is essential.

Many shipping companies (ie. STARBULK, A.M. NOMIKOS, DIANA SHIPPING SERVICES, ENTERPRISES, etc.) have trusted **SMM Emergency Response Service** as provider of that crucial service.

Last but not least, **SMM Emergency Response Service** has been recognized by Classification Societies as of equal value with the corresponding one provided by same.

The Benefits of our Service

- **We apply Top Quality Salvage Engineering Technology** for your Company's best **Emergency Preparedness**.
- **We use "HECSALV © Salvage Response Software" and we represent it since 1992**, the most Advanced and Internationally recognised **Salvage Engineering tool**, used by US Coast Guard, major Classification Societies and Oil Companies.
- **We prepare for Each One of Your Vessels Realistic Drill-Scenarios**, based on the current loading condition for the piece of mind for top management. **This makes the drills interesting, and therefore successful**. For each drill there is an **evaluation form** free of charge in dedicated software for that purpose.
- **We build, Excellent Communication Channels With Your Company**, for effective exchange of all vital information, with the aim of finding the best corrective action/response.
- **We deliver answers to all vital questions raised, i.e.:**
 - **We provide all third party support upon an incident**, by submitting to the Company all the necessary data/info that need to be transmitted to the relevant Authorities
 - **We provide Comparison Tables of "SMM Calculated Results" versus "Reported Data from Vessel "**, for the intact, initial damage and subsequent corrective actions taken.
 - **We assess and report in writing, to your office**, Drafts, Trim, Damage Stability & Damage Strength (Shear and Bending Stresses) results, **along with all necessary explanations to your staff**.
 - **In case of Bad Weather during a Collision at Sea, we additionally provide assessment of Hogging and Sagging Wave induced stresses**.
 - **In case of Grounding or Stranding, we also calculate Ground Reaction and the "Force To Free"** as well as, if applicable, **Tidal Change influence**, etc.

For Effective Response In Times Of Crisis Cover Your Company And Vessels Today

The role of a superior salvage response software is to provide the Salvage Engineer the resources for **efficient evaluation, effective solution planning and clear communication / documentation** for ship collision / grounding or other emergency situations. The following features of **HECSALV ©** demonstrate the power of the program we use:

- **Calculation of damaged condition** while free-floating and comparison of alternative scenarios.
- **Evaluation of wind, wave and tidal changes** on ground reaction, longitudinal strength and oil outflow.
- **Calculation of damaged condition** while stranded on one or multiple pinnacles or a shelf.
- **Calculation of residual strength** after user specified extent of damage.
- **Evaluation of partial or intermediate stage flooding** based on soundings or tank pressure.
- **Towing Analysis.**

SMM Emergency Response Service Implementation

We offer our service in two steps:

1. **Modeling Phase** We enter the data of each of your vessels in our computer, with an initial charge.
2. **Response Phase** You enroll in our **Emergency Response Service (on a 24 Hour Basis)**, with an annual fee.

Doing Business With Us Keeps Your Company Always One Step Ahead...

- Ø As an independent organization **we serve exclusively owner's interest.**
- Ø We are available **24 hours a day** and ready to monitor the condition of your ship in crisis within two hours.
- Ø Our **highly trained personnel** is always next to you, in order to serve you in the best possible manner. Our response team comprises of Naval Architects trained as Salvage Engineers.
- Ø Our **involvement** begins from the moment the incident is reported until vessel's refloating, towing analysis (if required) and passage to safe port.
- Ø The engineering model of your vessel, created by our response team, also offers an excellent prerequisite for your vessel's **after incident claim support.** The **engineering model signed by SMM Ltd. is delivered to** Shipping Company for your records.
- Ø We **guarantee high reliability,** based on our experience of successful design work and plan approval by all Classification Societies.

- Ø We can organize **emergency drills** as per your ISM and SOPEP requirements.
One (1) annual emergency drill is provided free of charge, as part of our service.

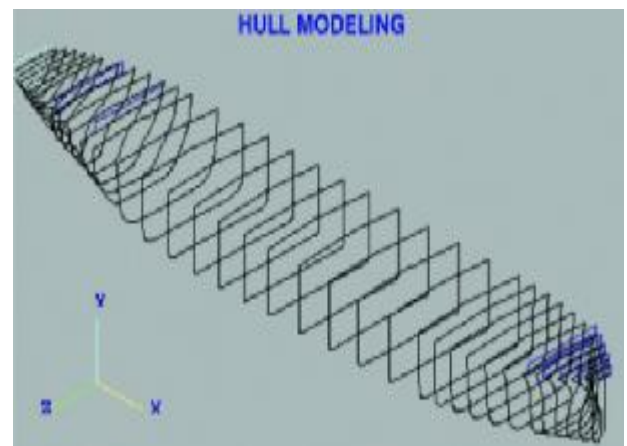
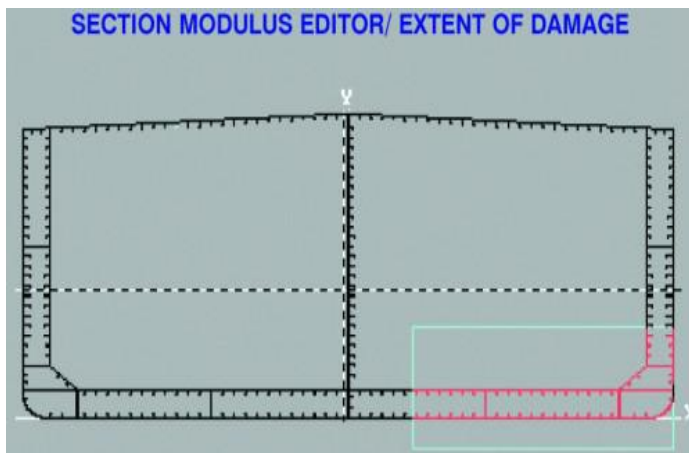
SMM Possesses Enhanced Know-How & Experience for Successful Salvage Planning

We possess **enhanced know-how and experience in salvage engineering** which is the essence of this service.

We take a **confidential** approach to your problem, working in close cooperation with your Operation/Technical Departments.

We have been **involved in numerous real cases** and have successfully performed our task.

We better handle all the information by having **standard communication procedures** among vessel, the shipping company and ourselves.



WE CAN SAIL TOGETHER.....

S.A.Malliaroudakis Maritime (UK) Ltd.
1, Portulacea Gardens · 15 High Snoad Wood, Challock · Ashford, Kent · TN25 4DS · U.K.
Tel: +44 (0) 1233 742673
Web: www.smmnet.co.uk · email: sales@smmnet.co.uk

P Please consider the environment before printing this email.