

S.A.MALLIAROUidakis MARITIME (UK) LTD.

Committed to improve your ship and operations



DESCRIPTION OF SHIP'S GIRDER DEFLECTION-DWT GAIN/LOSS

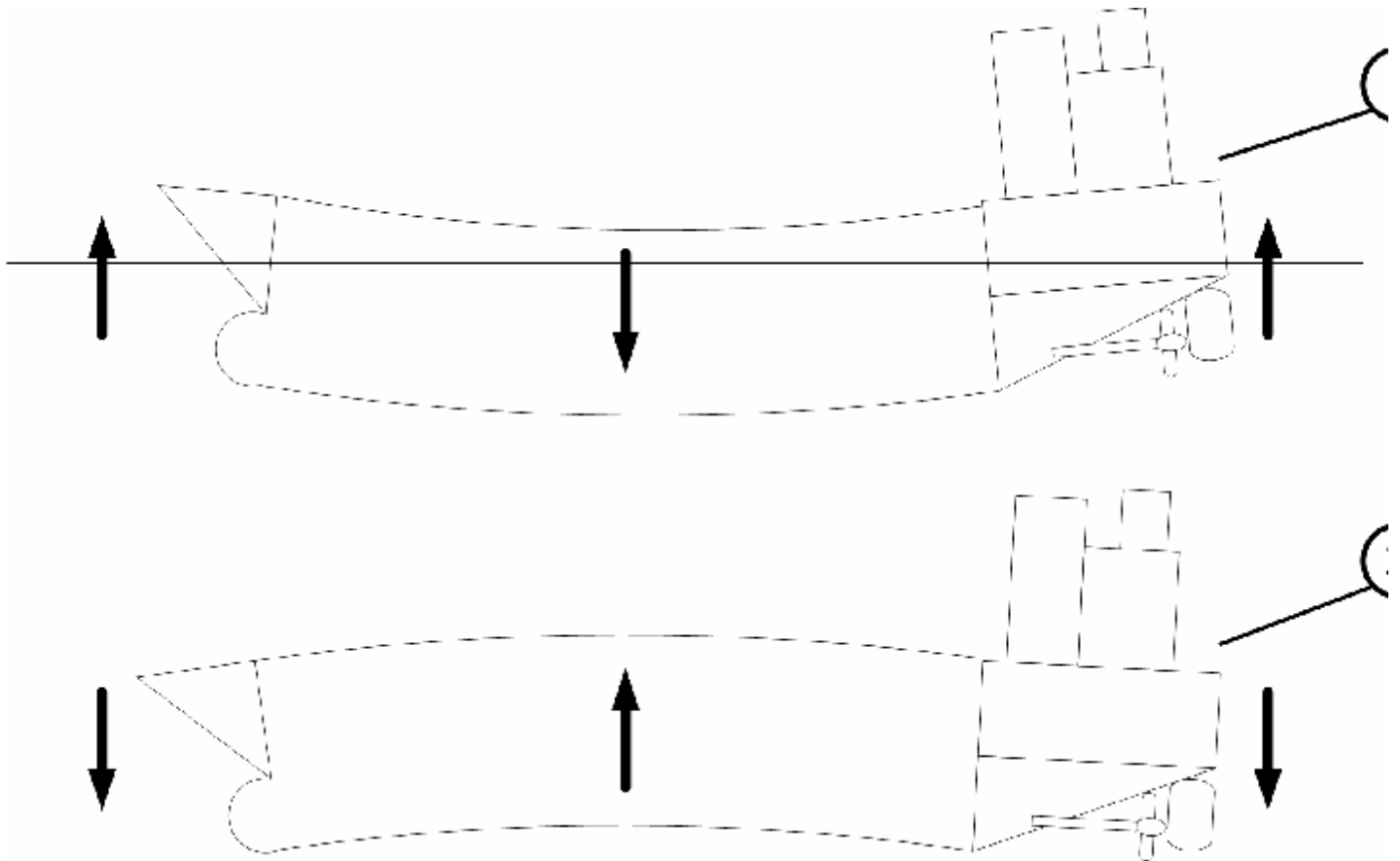


BRIEF DESCRIPTION

This special Multiload function apart from the typical Girder Deflection due to longitudinal Bending Moment incorporates the thermal deflection at midships due to air-sea water temperature difference. This is especially important when navigating at Plimsoll marks in cold waters (e.g. North Atlantic) with sun. In this condition the Hogging of the Hull is increased (or the Sagging is reduced) as the deck is warmed up with the sun radiation.

Offers special functions for vessel and office application like:

- DWT Gain/Loss due to Sagging/Hogging
- Adjusted Draughts of Deflected Vessel and comparison to the ones in rigid state
- Deflection at Midship
- Thermal Deflection
- Print-out
- In-house development of the software
- Automatic synchronization of data between vessel and office



WE CAN SAIL TOGETHER.....

S.A.Malliaroudakis Maritime (UK) Ltd.
1, Portulacea Gardens · 15 High Snoad Wood, Challock · Ashford, Kent · TN25 4DS · U.K.
Tel: +44 (0) 1233 742673
Web: www.smmnet.co.uk · email: sales@smmnet.co.uk

P Please consider the environment before printing this email.