

Vessel Floating Position Software

BRIEF DESCRIPTION

An external MULTILOAD (ML) Option that allows instant calculations of Air Drafts either from Radar Mast or from Hatches as well as Propeller Immersions & Draughts at MS (P) & (S) by entering any draught (AFT & FWD) & List upon checking simultaneously whether the applicable restrictions in terms of Air Draughts (Radar Mast & Hatches) are satisfied. The Draughts & List values are entered manually from your existing Loading Program for the examined Loading Condition, however such values (Draughts & List) are customizable.

Features & Benefits of this Module for vessel and office application:

- With the “Vessel Floating Position” module in use, you can easily calculate and provide all info requested by the Charterers/Port agents/Terminals, without requiring retrieving the needed figures from loading manuals and vessels' Plans.
- The most critical information of your vessel's floating position (ie. During loading/unloading operations) are fully accessible by anyone.
- The risk of losing important ship documentation during handling of hard copies is minimized.
- Expenses and delays for retrieving appropriate vessels' plans or manuals can be avoided.
- Automatic synchronization of data between vessels and office (fleet-based).
- Office fleet-based version

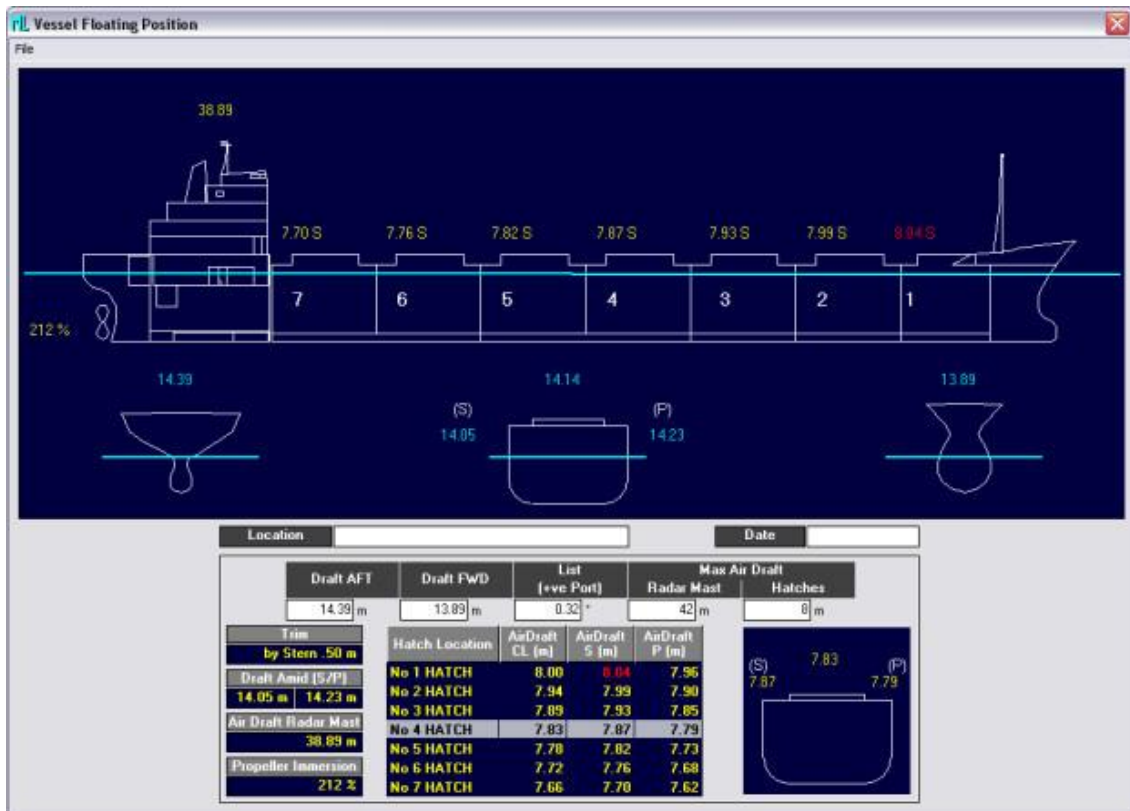
FREQUENTLY ASKED QUESTIONS

1. How the crew familiarization is achieved?
 - a. Manual is incorporated in each Program with detailed & extensive Instructions
 - b. Distant Training
 - c. Direct Replies to Email of Masters / Chief Officers / Chief Engineers with Cc to your good Company
 - d. User Friendliness of Software Interface with a brief description of required actions
2. How we can we handle tiresome ISM / SMS Amendments for alignment with this SMM Product?
 - a. SMM Software is tailored to your company's policy/S.M.S. meaning minor ISM/SMS alterations.
 - b. Just a quick reference to the SMM Software in place and their Manual Contents in ISM is, often, common and effective practice for the majority Shipping Companies.

3. Relative requirements of Programs (hardware, software, data exchange if any)
 - a. Light, server-based application running exclusively on Windows operating system environments
 - b. SMM Software can be operated by multiple users (clients) on a network
 - c. Sync Mechanism requires email access or *data import path* for the whole fleet or a desired path for each vessel.
 - d. Possible export in desired editable format, upon discussion and analysis.

SCREENSHOTS

Please see below Screenshots:



WE CAN SAIL TOGETHER.....

S.A. Malliaroudakis Maritime (UK) Ltd.

UK Office: 1, Portulacea Gardens · High Snoad Wood · TN25 4DS · Challock, Ashford, Kent · U.K. · Tel: [+44 \(0\) 1233 742673](tel:+44101233742673)

GR Office: 41, Agiou Dimitriou Str. · 185 46 · Piraeus · Greece · Tel.: +30 210 45 10000 · Fax: + 30 210 46 10333

Web: www.smmnet.com · Email: info@smmnet.co.uk , sales@smmnet.co.uk
